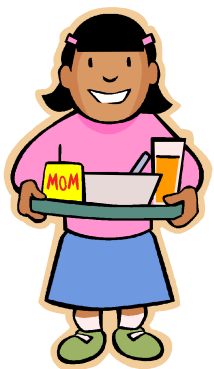


## WHAT IS THIS ABOUT?

As part of a larger change in disciplinary philosophy here at Sarah Adams, we are working toward making our cafeteria and playground areas more positive and focused on the high expectations we have for student behavior. The purpose is to help our students to achieve these high expectations through a more supportive discipline system that is focused on teaching, re-teaching and supporting appropriate behavior.

## POSITIVE INTERVENTIONS

- Controlled-choice seating arrangement with “Sit where you want” Fridays
- “The Golden Lunch Tray” awarded weekly to the table displaying the most positive character
- Student table helpers to keep the cafeteria clean and orderly



# Cafeteria & Playground Code of Conduct

SARAH ADAMS ELEMENTARY SCHOOL  
*Home of “Buddy” the Bulldog!*



DEVELOPED DECEMBER 2005

## SUPERVISOR EXPECTATIONS

All Supervisors are EXPECTED to:

- Maintain a positive environment
- Treat all students with respect
- Speak in a pleasant tone of voice, especially when using the microphone
- Work with and support one another
- Avoid group punishment
- Provide appropriate expectations for behavior and consequences when necessary
- Write up a “character expectation” form for student behavior when necessary
- Report any serious behavioral issues to the office secretaries
- ENJOY the great kids we have at Sarah Adams!



## STUDENT EXPECTATIONS

All Students are EXPECTED to be:

- **Trustworthy**  
Be honest • Be reliable • Have the courage to do the right thing • Build a good reputation • Be loyal
- **Respectful**  
Treat others with respect • Be tolerant of differences • Use good manners • Be considerate of the feelings of others • Deal peacefully with anger, insults and disagreements
- **Responsible**  
Do what you are supposed to do • Persevere: keep on trying! • Always do your best • Use self-control • Be self-disciplined • Think before you act • Be accountable for your choices
- **Fair**  
Play by the rules • Take turns and share • Be open-minded; listen to others
- **Caring**  
Be kind • Be compassionate and show you care • Express gratitude • Forgive others • Help people in need
- **A Good Citizen of Sarah Adams**  
Do your share to make your school and community better • Cooperate • Be a good neighbor • Obey rules • Respect authority

## PARENT EXPECTATIONS

All Parents are EXPECTED to:

- Follow the school rules and procedures for visiting, observing or volunteering in the cafeteria/playground.
- Be respectful to the supervisors and staff
- Support the supervisors by maintaining high expectations for positive student behavior
- Support behavior interventions for students by talking about positive behavior and expectations with your student continually and when they receive a character expectation form
- Speak to a supervisor or the principal privately if there is a concern - not in front of students.
- Be a positive role model of the 6 pillars of character while in the building and at home!

## SCHOOL SUPPORTED CONSEQUENCES

Minor Offenses:

- Verbal/Non-Verbal redirection
- 5 mins on the wall
- Separation from individuals or activity
- Equipment restrictions

Mid-Level Offenses:

- Character Expectation form sent home
- 10 mins on the wall
- 15 mins on the wall
- Long-term (multiple days) separation
- Location restriction
- Long-Term (multiple days) equipment restrictions
- Re-assign tables

Serious or Persistent Offenses:

- Character Expectation form sent home with follow-up parent phone call from the school
- Permanent separation from individuals or activity
- Permanent equipment restriction
- Permanent location restriction
- Removal from lunch or recess for a silent character reflection time in the office
- Student-Principal conference

***Any student who is unable to maintain appropriate and safe behavior in the cafeteria or on the playground continuously will require a mandatory conference with the principal and the parent to rectify the situation.***

